

## Current Indicators

### Current Indicators

#### Wire-Mounted Current Indicators

Tempco's wire-mounted electrical current indicators provide an effective method of monitoring electrical current. The indicator is attached directly to a current-carrying wire. When the current exceeds the turn-on point, the LED will illuminate to indicate the presence of current.

#### Red LED Indicator

Part Number: CTT00001

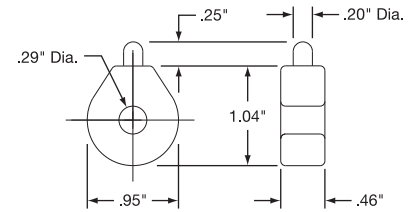
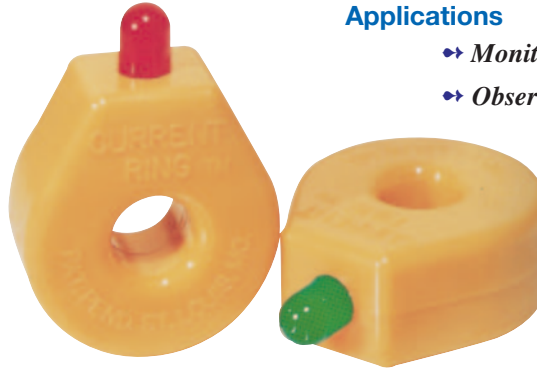
#### Green LED Indicator

Part Number: CTT00002

#### Panel Mounting Bracket

Part Number: CTT00003

Wire Passes	Turn-On Point (Amps AC)		Max. Wire Dia. (in.)
	Red LED	Green LED	
1	2	2.5	.29
2	1	1.25	.14
3	.66	.83	.13
N	$2 \div N$	$2.5 \div 2$	-



#### Design Features

- \* Self Powered
- \* Easy to Install
- \* Supplied with Plastic Tie
- \* Indicates Current from 2 to 100 Amps AC (1 Wire Pass)

#### Applications

- ➔ Monitor Heater Element Status
- ➔ Observe Remote Loads

#### Remote Current Indicators

The Tempco remote current sensing transformer is installed around the current-carrying wire and is connected directly to the LED panel indicator. When the current exceeds the turn-on point of the sensing transformer, the LED illuminates to indicate the presence of current. Two sizes of remote current sensing transformers are available for use with either of two types of LED indicators listed below at right.



#### Specifications

Max. Wire Dia.: .29 inches  
 Indicating Range: 2 to 100 Amps AC  
 Max. Transient Current: 150A for 5 sec.  
 Working Class: 600 Volts, 50-60 Hz  
 Lead Wire Length: 12"  
 Max. Operating Temperature: 140°F/60°C  
 Part Number: CTT00004

#### Specifications

Max. Wire Dia.: .55 inches  
 Indicating Range: 2.5 to 100 Amps AC  
 Max. Transient Current: 150A for 5 sec.  
 Working Class: 600 Volts, 50-60 Hz  
 Lead Wire Length: 24"  
 Max. Operating Temperature: 140°F/60°C  
 Part Number: CTT00005

#### Typical Applications

- ➔ Indicate Open Heater Elements
- ➔ Observe Remote Loads
- ➔ Indicate Phase Loss
- ➔ Monitor Motor Operation

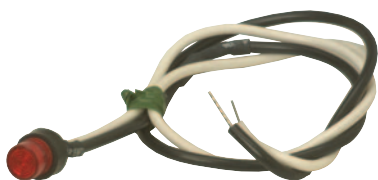
#### Surface Mounting Bracket

For use on model CTT00005 only

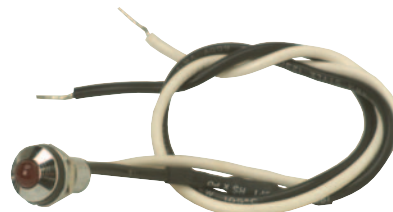
Dimensions: 1.37" x 1.25"  
 Mounting Dims.: (2) #6 screws .87" apart  
 Part Number: CTT00006

*All Items Available from Stock*

#### Panel LED Indicators for Remote Current Transformers



Press-In Panel LED Indicator with 12" leads



Splash-Proof Panel LED Indicator with 12" leads

#### Press-In LED Panel Indicator

LED Type: T-1-3/4", Red Bipolar  
 Mounting Hole: .250"  
 Part Number: CTL00001

#### Splash-Proof LED Indicator

Supplied with rubber sealing washer LED Type: T-1-1/4", Red Bipolar  
 Mounting Hole: .312"  
 Part Number: CTL00002