

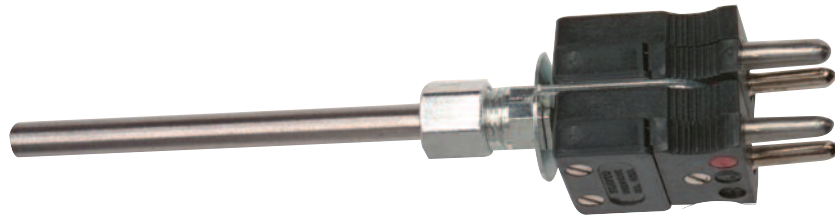
Accessories for Standard Plugs and Jacks

Continued from previous page...

Dual Tube Adapters

- * Assemble Standard Connectors into Dual Connectors
- * For adjacent TEMPCO-PAK
- * Has Brass Ferrule
- * Use 2-Pin Connectors only

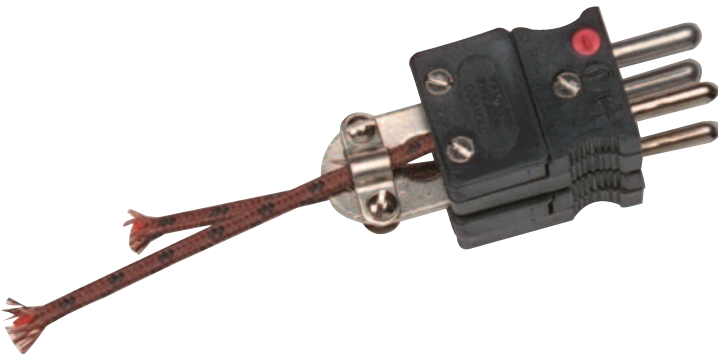
Sheath Diameter	Part Number
.063"	TCA-103-112
.125"	TCA-103-113
.188"	TCA-103-114
.250"	TCA-103-115
.313"	TCA-103-116
.375"	TCA-103-117



Dual Cable Clamps

- * Assemble Standard Connectors into Dual Connectors
- * Accommodate either One or Two Lead-In Cables
- * Use 2-Pin Connectors only

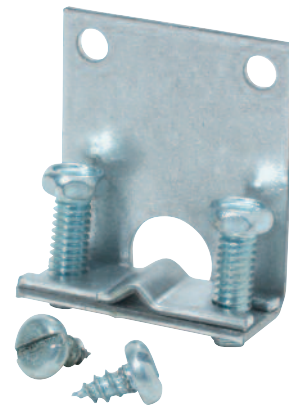
Part Number: **TCA-107-103**



Thermocouple Bracket

- * Used to mount T/C Probes on Panel or Oven Walls
- * Supplied with two #6 Self-Tapping Screws

Part Number: **SMPR-1062**



Filler Plate Set

- * When combined with Dual Tube Adapter or Dual Cable Clamp, the Filler Plate Set provides the 3/4" pin spacing of a single Duplex Connector.

Part Number: **TCA-107-104**

