

Die Cast Aluminum Heads

Design Features:

- * Plated chain attaches cover to body
- * Body is O-ring gasketed
- * Available in 2-terminal or 4-terminal
- * Comes in three sizes—Standard, Medium and Miniature—to allow for design flexibility
- * Has grommeted conduit entry for lead wire or flexible cable

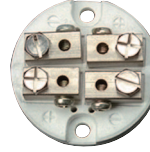
Type "A" Standard Size Die Cast Aluminum Head



3-1/2"H x 4"L x 3-1/4"W



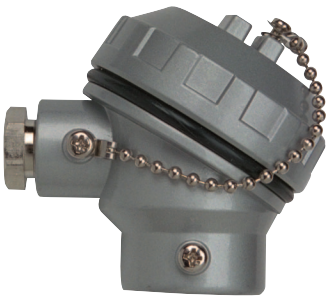
2-Terminal Ceramic Block
P/N: **TCA-116-101**



4-Terminal Ceramic Block
P/N: **TCA-116-102**

Sensor Opening (FNPT)	Conduit Opening (FNPT)	Part Number		
		Head Only	Head with 2-Terminal	Head with 4-Terminal
3/4"	1/2"	TCA-110-104	TCH10001	TCH10003
1/2"	1/2"	TCA-110-105	TCH10002	TCH10004

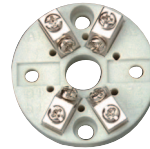
Type "B" Medium Die Cast Aluminum Head



3-1/2"H x 3-3/4"L x 2-5/8"W



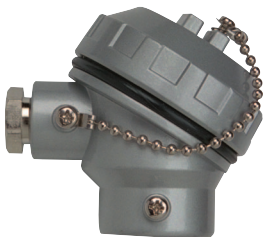
2-Terminal Ceramic Block
P/N: **TCA-116-103**



4-Terminal Ceramic Block
P/N: **TCA-116-104**

Sensor Opening (FNPT)	Conduit Opening (FNPT)	Part Number		
		Head Only	Head with 2-Terminal	Head with 4-Terminal
1/2"	3/8"	TCA-110-106	TCH10005	TCH10008
3/8"	3/8"	TCA-110-107	TCH10006	TCH10009
1/4"	3/8"	TCA-110-108	TCH10007	TCH10010

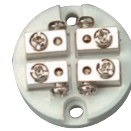
Type "C" Miniature Die Cast Aluminum Head



2-5/8"H x 3"L x 2-5/16"W



2-Terminal Ceramic Block
P/N: **TCA-116-105**



4-Terminal Ceramic Block
P/N: **TCA-116-106**

Sensor Opening (FNPT)	Conduit Opening (FNPT)	Part Number		
		Head Only	Head with 2-Terminal	Head with 4-Terminal
1/2"	3/8"	TCA-110-109	TCH10011	TCH10014
3/8"	3/8"	TCA-110-110	TCH10012	TCH10015
1/4"	3/8"	TCA-110-111	TCH10013	TCH10016

Type "H" Standard Cast Iron Head



Approximate Size
3-1/2"H x 3-1/2"L x 3-1/2"W

Design Features:

- * Stainless Steel chain and screws
- * High temperature painted finish
- * Neoprene rubber O-ring for weatherproof seal

Terminal Blocks

Can use terminal blocks from Type A and Type B Head (page 14-98), and Spring-Loaded (page 14-100)

Sensor Opening (FNPT)	Conduit Opening (FNPT)	Part Number
1/2"	1/2"	TCA-110-152
1/2"	3/4"	TCA-110-153
3/4"	3/4"	TCA-110-158

Bakelite Series

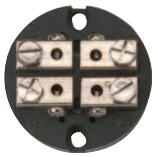
Design Features:

- * Lightweight
- * Non-combustible, Acid and Alkali resistant body
- * Maximum service temperature of 662°F (350°C)
- * Plated chain attaches cover to body
- * Body is O-ring gasketed
- * Available in 2-Terminal or 4-Terminal
- * Has grommeted conduit entry for lead wire or flexible cable
- * Available in two sizes: Standard and Small

Type "F" Standard Size Bakelite Head



Bakelite
2-Terminal Block
P/N: TCA-116-111



Bakelite
4-Terminal Block
P/N: TCA-116-112



Approximate Size:
3-7/8"H x 4-1/8"L x 3-3/16"W

Sensor Opening (FNPT)	Conduit Opening (FNPT)	Head Only	Part Number	
			Head with 2-Terminal	Head with 4-Terminal
1/2"	1/2"	TCA-110-124	TCH10041	TCH10042

Type "G" Miniature Size Bakelite Head



Bakelite
2-Terminal Block
P/N: TCA-116-113



Bakelite
4-Terminal Block
P/N: TCA-116-114



Approximate Size:
2-5/8"H x 3"L x 2-5/16"W

Sensor Opening (FNPT)	Conduit Opening (FNPT)	Head Only	Part Number	
			Head with 2-Terminal	Head with 4-Terminal
1/4"	3/8"	TCA-110-125	TCH10043	TCH10044

Thermocouple Accessories

Type P Polypropylene Head

Design Features:

- * FDA approved white polypropylene for food industry
- * Screw cover head with stainless steel chain and screws
- * 1/2" NPT process connection and 3/4" NPT conduit connection



P/N: TCA-110-147

Terminal Blocks

Can use terminal blocks from Type A and Type B Head (page 14-98), and Type F Head (page 14-99)

Approximate Size:
3-1/4"H x 3-1/2"L x 3-1/4"W

Type S Stainless Steel Head

Design Features:

- * 316 Stainless Steel body
- * Stainless Steel chain and screws
- * Neoprene rubber O-ring for weatherproof seal

Terminal Blocks

Can use terminal blocks from Type A and Type B Head (page 14-98), and Spring-Loaded (below)

Approximate Size:
3-1/2"H x 3-1/2"L x 3"W



Sensor Opening (FNPT)	Conduit Opening (FNPT)	Part Number
1/2"	1/2"	TCA-110-154
1/2"	3/4"	TCA-110-155

Type N Miniature Nickel-Plated Steel Head



Approximate Size:
1-1/8" Dia. x 2-3/8"L

Design Features:

- * 2- or 4-terminal block included
- * 1/8" NPT or 1/4" NPT Process opening
- * Neoprene Cap Grommet for wire entry

Part Number	Thread Size	Number of Terminals
TCA-110-146	1/4 NPT	2
TCA-110-148	1/4 NPT	4
TCA-110-149	1/8 NPT	2
TCA-110-150	1/8 NPT	4

Spring-Loaded Terminal Blocks

- * Used on spring-loaded assemblies
- * Ceramic with nickel-plated brass terminals
- * Steel plate for mounting
- * Can be used with Type A, B, F, H, P and S Heads



2-Terminal Block

P/N: TCA-116-116



4-Terminal Block

P/N: TCA-116-119



3-Terminal Block

P/N: TCA-116-122



6-Terminal Block

P/N: TCA-116-120